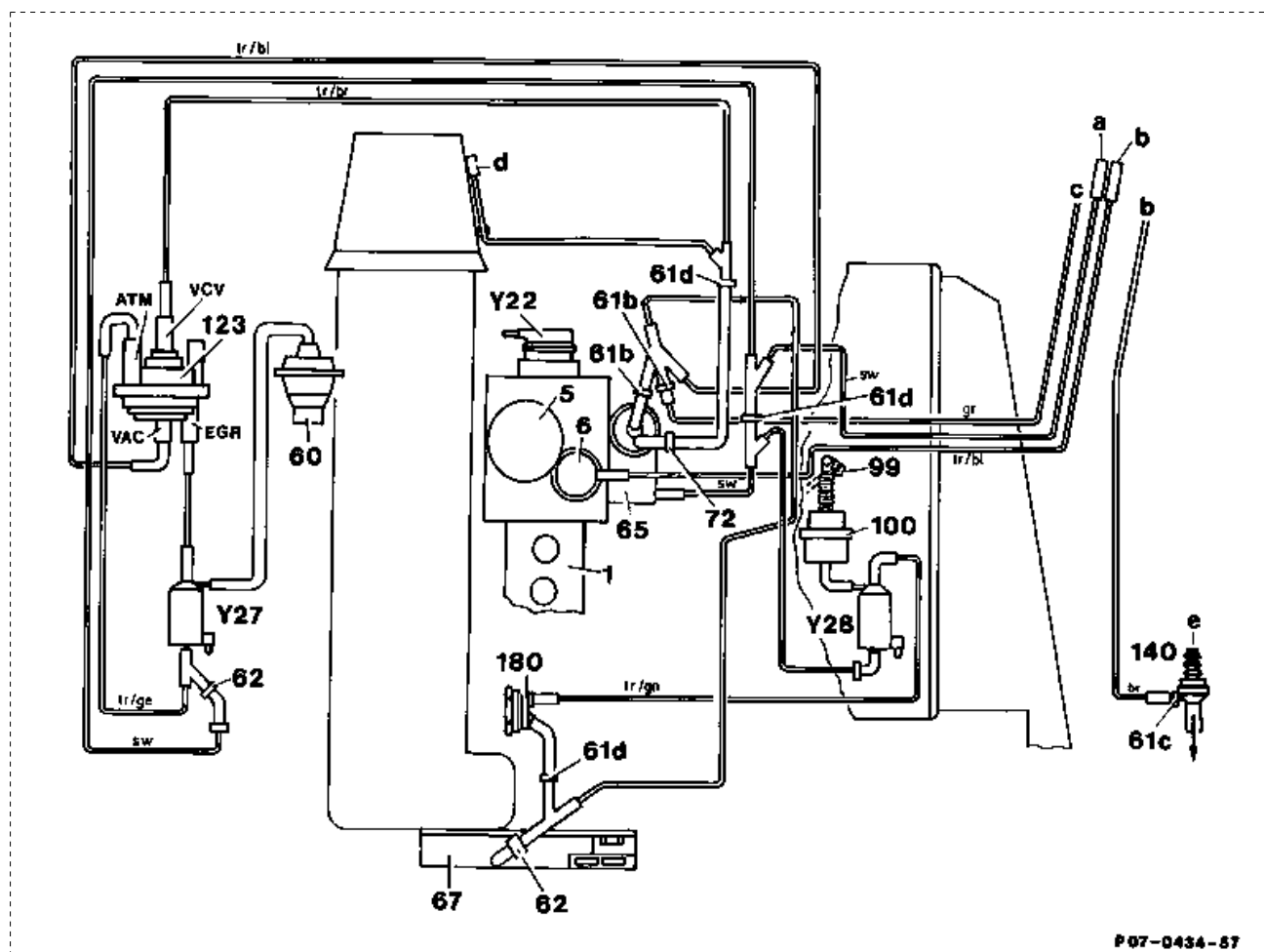


# 07.1-500 Vacuum diagrams



Engine 603.91 (A) (CH) (DK) (N) (S) (FIN) model year 1991 and Standard KAT as of 06/90 as of model year 1992 all national versions with ELR  
 Vacuum circuit diagram exhaust gas recirculation with automatic transmission

1	Injection pump	Y22	Electromagnetic actuator ELR
5	ADA unit	Y27	Change-over valve AGR
6	Vacuum unit (stop)	Y28	Change-over valve vacuum control flap
60	ARF valve	a	Ventilation to vehicle interior
61b	Choke	b	Key cut-out
61c	Choke 0.5 mm	c	Remaining users
61d	Connector	d	Vacuum unit automatic transmission
62	Filter	e	To brake booster
65	Vacuum control valve		
67	Vacuum pump		
72	Damper		
99	Vacuum control flap		
100	Vacuum unit/vacuum control flap	VAC	Vacuum from vacuum pump
123	Transducer	VCV	To vacuum control valve
140	Check valve break booster	ATM	Ventilation to vehicle interior
180	Therموالve opens at approx. 40 °C (black)	EGR	Exhaust gas recirculation to exhaust gas recirculation valve